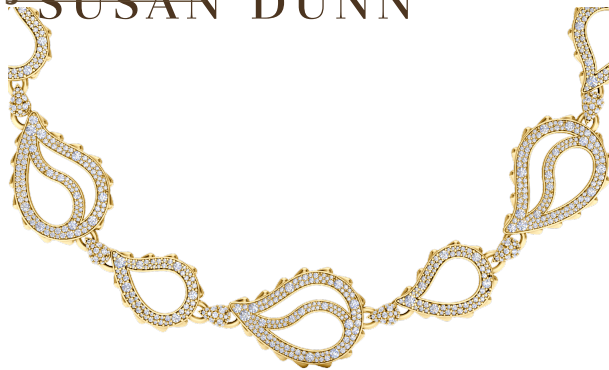




High Pave Royal Duo Necklace

~~J-SE-170-VG~~
SUSAN DUNN



The High Pave Royal Duo Necklace is available in 18K Yellow ecological gold with Fairmined Certification. Encrusted with diamonds of the finest VVS, D-F quality, responsibly mined and impeccably cut. This stunning piece is one-of-a-kind: individually cast, handset diamonds, meticulously hand finished and polished to perfection.

Diamonds: 9.1CT

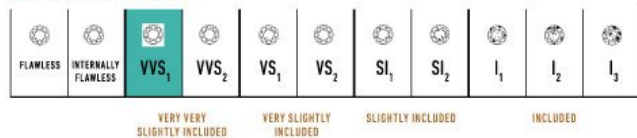
Stone Count: 1557

18K Gold: ~116.7g

Measurements: 17 x .6 x .3in (432 x 15 x 9mm)

- 18K Yellow Ecological Gold with Fairmined Certification
- Ethically sourced D-F and VVS1 Melee Diamonds
- Signature Lobster Catch and Loop oversized for ease of use
- Individually Cast, Hand Finished and Polished by Master Jewelers
- Presented in our custom Signature Embossed Wood Case with Signature Waterfall-Patterned Drawstring Cover
- [Jewelry Care Instructions](#)
- [Jewelry Icon Sizes](#)

GIA CLARITY SCALE



GIA COLOR SCALE

