



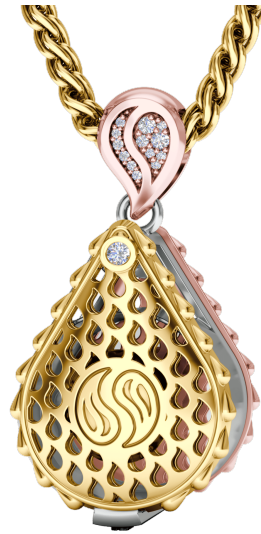
SUSAN DUNN

FINE JEWELRY



## Royal Signature Collector's Loupe Pendant

**J-SE-026-YG**



Fine Jewelry Collectors, behold an indispensable treasure. Our Royal Signature Collector's Loupe Pendant is a genuine showstopper and conversation piece that allows you to be up close and personal with your favorite gemstones. Revel in the mesmerizing facets and stunning sparkle of your exquisite jewels and exult in sporting our amazing Signature Loupe Pendant for all to appreciate.

This creative masterpiece is a work of art, individually cast with handset precious individual and melee diamonds, meticulously hand finished and polished to perfection. For the jewelry aficionado who has everything, treat yourself or surprise a loved one with a truly one-of-a-kind wearable sculpture.

**Diamonds:** 0.3CT

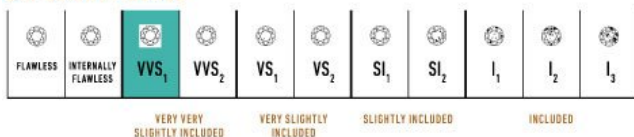
**Stone Count:** 15

**18K Gold:** ~19.6g

**Chain Length:** 24in (607mm)

- 18K Yellow Ecological Gold with Fairmined Certification
- Ethically sourced D-F and VVS1 Melee and Single Diamonds
- Individually Cast, Hand Finished and Polished by Master Jewelers
- 18mm 10x magnification triplet lens fully corrected for spherical aberration (distortion) and chromatic aberration (color) - Issued by the G.I.A. (Gemological Institute of America) - Encased in 18K White Gold for visual clarity
- Luxurious 2.5mm Signature Chain - 24" Length
- Signature Lobster Catch oversized for ease of use
- Presented in our custom Signature Embossed Wood Case with Signature Waterfall-Patterned Drawstring Cover

### GIA CLARITY SCALE





SUSAN DUNN



FINE JEWELRY



GIA COLOR SCALE

